

New MB23 Brake Linings



Introducing New Severe Duty Brake Linings

MB23 is a technologically advanced lining formulation designed to address fleet needs for a brake lining that provides excellent service life in a demanding environment. Applications like liquid tanker, grain, cement or standard duty refuse need specific friction materials designed to handle their unique stopping requirements. MB23 will improve your bottom line through better performance and longer life.

MB23 Features

- Designed for severe duty applications
- Long service life in demanding environments
- Dependable stopping performance
- Excellent brake fade and recovery characteristics
- Excellent drum compatibility



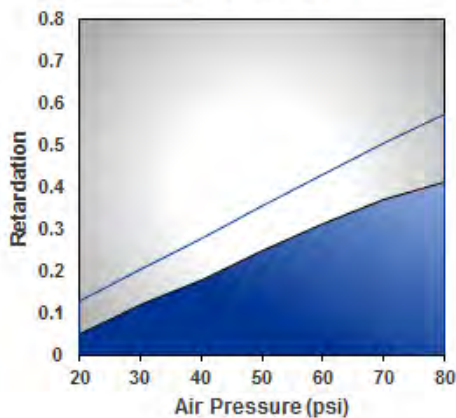
As the test results below indicate, MB23 easily meets the Federal regulations for brake effectiveness, fade, and recovery in compliance with the F.M.V.S.S. #121 inertia dynamometer test procedure.

A severe duty Carlisle lining offering high performance and extended life between relines.

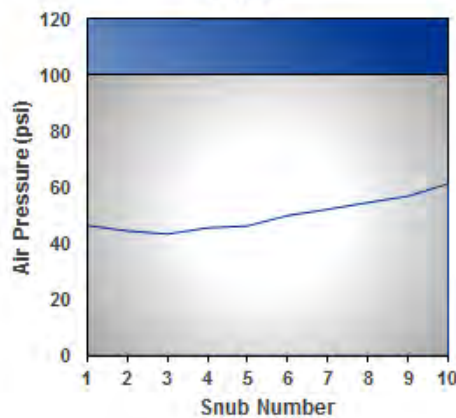
MB23 shows a highly desirable flat performance curve in both brake fade and recovery. This is a result of the excellent heat dissipation properties of the material, allowing it to perform repeated stops without losing effectiveness.



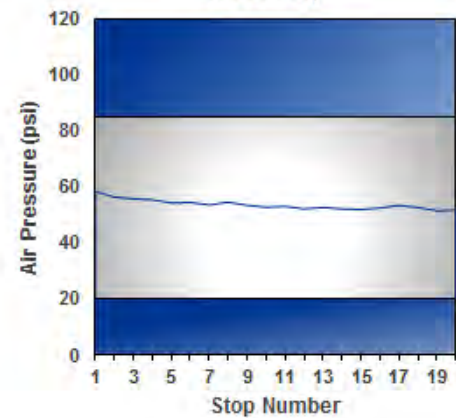
Effectiveness



Power



Recovery



Testing conducted in accordance with F.M.V.S.S. #121 criteria @ a 23,000# axle load; 161/2" x 7"S-cam air brake; 30 x 5.5" input power; and a 21.5" tire rolling radius. Shaded area indicates non-compliance.



The Carlisle Brake & Friction Advantage

Carlisle Brake & Friction is dedicated to remain at the forefront of brake component and friction material solutions development for heavy-duty, On-Highway truck and fleet applications. World-class manufacturing, original equipment expertise, superior development practices and advanced application engineering are the basis of Carlisle's capacity to support this ideal platform for producing only the highest-quality brake products on the market today. Carlisle backs all of its products with a limited lifetime warranty for form, fit and workmanship. Whether its cost per mile reduction, improved drivability or safety, Carlisle's aftermarket brake products will meet or exceed your expectations. Take the risk out of purchasing replacement parts and request a Carlisle solution.



Additional Carlisle On-Highway Brake & Friction Solutions

Brake Block Materials

EC20

Economy grade for the price sensitive buyer

EC23

Standard grade for the price sensitive buyer

MB20

Designed for the price sensitive, medium grade buyer

MB21

Delivers a longer lining life with excellent drum compatibility



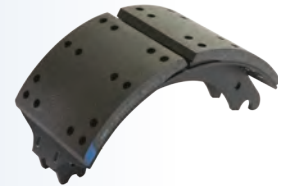
Brake Shoes

Carlisle brake shoes are engineered to meet the demands required in heavy-duty brake applications



Brake Shoe Assemblies

Carlisle Brake Block Set
Our shoe riveting operation uses the highest quality rivets manufactured to OE specifications.



Clutch Friction

VT Carbotic, VT Ceramic
World-class design by industry experts ensures form, fit and function.



Disc Brake Pads

F1 Carbon
Semi-Metallic Compound

F3 Carbon
Semi-Metallic Compound

High Performing disc brake pads for medium to heavy-duty truck applications.



Contact us

Carlisle Brake & Friction
Phone: 1-855-403-9083
Email: sales@carlislecbf.com
Visit Us Online @ www.CarlisleCBF.com